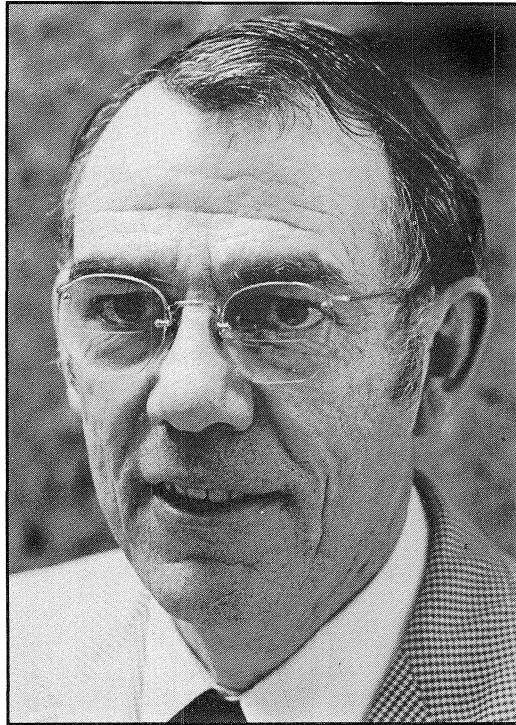


A Special Tribute to Calvin T. Long



***Teacher • Researcher • Mentor
Leader • Friend***

This edition of *The Fibonacci Quarterly* is being dedicated to Professor Calvin T. Long for his inspirations to his students, for his actions as a role model to his fellow Mathematicians, and for his extremely active participation in The Fibonacci Association as an author, referee and member of the Board of Directors.

Thank You!

A Short Biography of Calvin T. Long

Calvin T. Long was born in Rupert, Idaho, where he received his elementary and secondary education. Inspired by his teachers, he continued his education and was granted a B. S. degree from the University of Idaho in 1950, an M. S. degree from the University of Oregon in 1952 and a Ph.D. under the direction of Professor Ivan Niven, from the University of Oregon in 1955. After graduation, he spent one year as an analyst in Washington, D. C. working for the National Security Agency. In 1956, Cal accepted a position in the Mathematics Department at Washington State University (WSU) in Pullman, Washington, where he remained until his retirement in 1992.

It would be impossible to list all of Professor Long's accomplishments during his tenure at WSU so we will try to list only what we consider to be the most important ones. During the 1960s and early 1970s Cal served as director or associate director for several NSF-funded institutes for elementary, junior and high school mathematics teachers. This led to his deep interest in mathematics education. From 1970-78, he served as department chairman.

As a teacher, his students both at the graduate and undergraduate level respected him. He was a task-master but had a good sense of humor, sound scholarship and the ability to lead his students to their best efforts in an uncompromising way by insisting on excellence. For his efforts, Professor Long received the President's Faculty Excellence Award for Teaching in 1987 and was one of WSU's Case Award Nominees and Centennial Lecturers. He was also a visiting professor at three foreign and two American universities. During his career he directed 27 masters students and was the thesis advisor for five doctoral students.

As a researcher, he was the author or co-author of at least twenty-four grant proposals that funded programs or institutes related to mathematics education. He was the author of several books on number theory and mathematics education. He did extensive reviewing and refereeing of research papers and was an associate editor for two mathematics journals. He had more than 80-refereed publications and gave more than 150-invited lectures throughout the United States, Canada, Australia, New Zealand and Germany. He has also given at least 50 invited colloquium talks. Professor Long is a member of many honor societies, including Phi Beta Kappa. He is also an active member of many mathematical societies, including the Mathematical Association of America (MAA), the American Mathematical Society (AMS), the Fibonacci Association and the National Council of Teachers of Mathematics. He was elected Vice-Chairman, Chairman and Governor of the Northwest Section of the MAA. He served on numerous local, regional and national committees. For his dedication to his profession, he received the Certificate of Meritorious Service from the MAA in January of 1991.

As a mentor, he was always there for his fellow teachers as well as for his current and former students. As a leader, he was a state coordinator for the American High School Mathematics Examination, he was one of the organizers of the WSU Mathematics Honors Scholarship Competition program, and he was a consultant to the Washington State Superintendent of Public Instruction, to the State Department of Education and to the National Science Foundation.

Concerning The Fibonacci Association, Cal is a Charter Member. He served on the Board of Directors from July 6, 1983 to June 19, 1999 and he was the President for the last fifteen years. He was a strong supporter of the Fibonacci Research Conferences, attending most of them and presenting papers. Under his leadership, the organization became stronger and more unified.

On the unprofessional side, Cal is an avid fisherman and lover of the outdoors. It was not unusual to see him fly casting in the lakes and streams or walking the trails of the idyllic Idaho wilderness and sometimes you could even see him boating down the rapids of the Snake River. Cal also has a beautiful tenor voice, which he put to good use as a member of his church choir, a member of the Vandeleers, a well known University of Idaho choral group, a member of the Eugene Gleesmen, during his graduate years, a member of the Pullman/Moscow Chorale and a member of the Idaho-Washington Symphony Chorale. Cal was also a very dedicated husband whose strongest supporter was his wife Jean on whom he always knew he could count on because her support was always there. Finally, Cal was a devoted father to his two children, Tracy and Greg.

Cal, for all that you have done in so many ways for so many people, we say thank you. Enjoy retirement and know that you have made a difference to so many people who have crossed your path.