

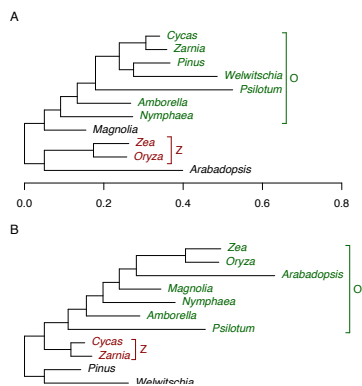
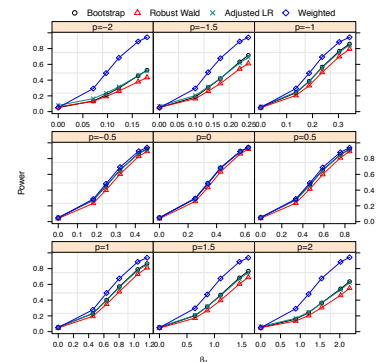
# Ed Susko

## Statistics



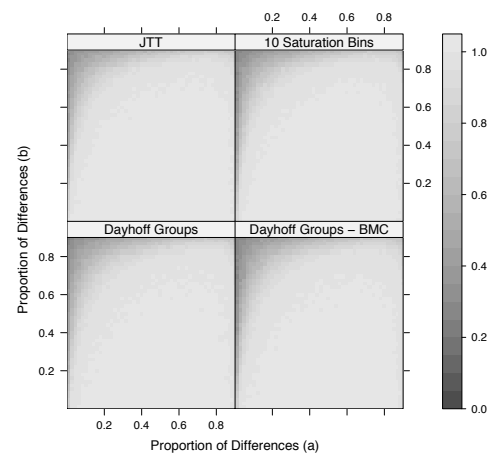
Dr. Susko has research interests in **statistical inference** and applications. He is also part of an interdisciplinary team working on **statistical evolutionary bioinformatics**.

**Statistical Inference:** How do we test hypotheses in settings where standard theory does not apply? How do we best implement bootstrapping? What sorts of model misspecification does bootstrapping work with?



**Evolutionary Inference:** What are the major events of early evolution? How do we deal with the unusual parameter space of trees? How do we best adjust for heterogeneity? Outliers?

**Adaptive Evolution:** What models and methods are best for determining where in a genome adaptive evolution has occurred? How do we balance computational complexity and full use of data?



For more information, contact:

*Dr. Ed Susko*  
*Department of Mathematics and Statistics*  
*Dalhousie University*  
*(902) 494-8865, susko@mathstat.dal.ca*



**DALHOUSIE**  
**UNIVERSITY**

*Inspiring Minds*